

ARTA Deposit  
Installing MSDE 2000 SP4 Standalone and  
Small Networks  
Version 5.1 or greater

# Installing MSDE 2000 Service Pack 4 on ARTA Deposit Standalone and Small Networks

2/14/06

## Copyright Information

© 2006 Bankers Systems, Inc., a Wolters Kluwer Company, St. Cloud, Minnesota.

All rights reserved. Published in 2006.

Printed in the United States of America.

The reproduction of this material is strictly prohibited. Information in this document is subject to change without notice and does not represent a commitment on the part of Bankers Systems, Inc. (BSI). The software described in this document is furnished under a license agreement and may be used or copied only in accordance with the terms of the agreement.

## Legal Counsel

In developing this program, online documentation, printed manuals, forms, and documents we have interpreted the various laws, regulations, and commentary. We cannot and do not guarantee that our interpretations are correct, except as is stated in the ARTA Deposit license agreement.

Law requires the following notice:

**BANKERS SYSTEMS' PRODUCTS AND SERVICES ARE NOT A SUBSTITUTE FOR THE ADVICE OF AN ATTORNEY.**

We encourage you to seek the advice of your own attorney concerning the use and legality of this program, documentation, and forms. If your interpretations or your counsel's interpretations are contrary to ours, you should, of course, follow your own interpretations in using this program, documentation, and forms.

## Version

Installing MSDE 2000 Service Pack 4 on ARTA Deposit Standalone and Small Networks

2/14/2006

## Trademarks and Credits

U.S. Patent No. 6,006,242

BANKERS SYSTEMS INC., Rembrandt, are registered trademarks of Bankers Systems, Inc.

Expere is a trademark of Bankers Systems, Inc.

InstallMaster is a registered trademark of Wise Solutions, Inc.

Microsoft, MS, MS-DOS, Windows, and Windows NT are registered trademarks of Microsoft Corporation in the United States and other countries.

SQL Server 2000 is a trademark of Microsoft Corporation.

All other trademarks are the property of their respective owners.

## Introduction

To install the MSDE 2000 Service Pack 4 on an ARTA Deposit standalone system or small network, you need to have ARTA Deposit version 5.1 or newer installed.

**Note:** These instructions are not applicable for use on ARTA Deposit Client or ARTA Deposit large network installations.

We highly recommend that you complete a full system backup prior to installing this service pack.

## Installing the Service Pack

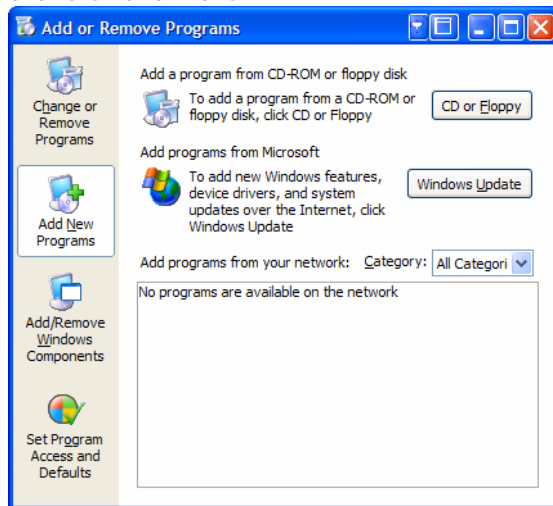
Installation first requires the download of the service pack followed by installation using Add or Remove Programs from the Windows Control Panel.

**Warning!** Do not download the service pack and install by double-clicking the extracted setup.exe. Additional information must be passed to the setup program as described later in these instructions.

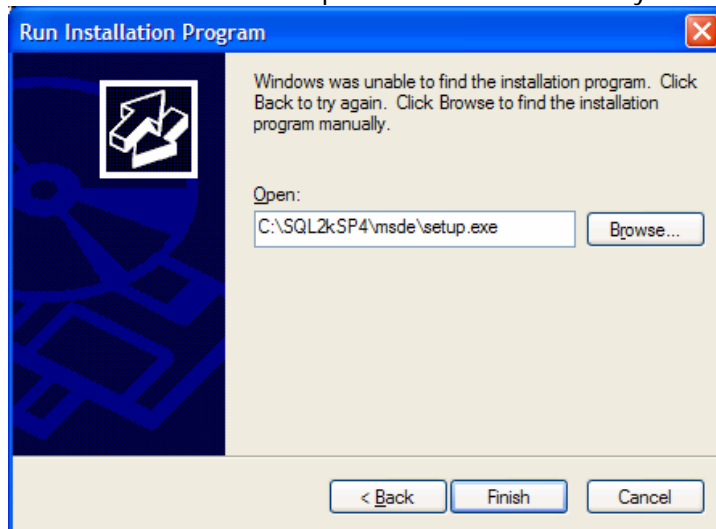
1. The Microsoft SQL Server 2000 Desktop Engine Service Pack 4 (MSDE 2000 SP4) is available from [Microsoft's Download Center](#). Search the Download Center for KB884525 which will yield a link to Microsoft SQL Server 2000 Service Pack 4, release date 05/06/2005. Click this link to access the download details.
2. Scroll down the page to the section entitled Files in This Download. Two files must be downloaded:
  - ReadMeSQL2K32Desksp4.htm, 154kb.  
This is the Microsoft documentation for the service pack. Please read before applying the service pack to any of your production systems.
  - SQL2000.MSDE-KB884525-SP4-x86-ENU.exe, 78.5MB.  
This compressed EXE contains the service pack. The service pack is ready for installation after extraction.
3. Download these two files to a convenient location on your hard drive.
4. Read ReadMeSQL2K32Desksp4.htm.
5. Double-click SQL2000.MSDE-KB884525-SP4-x86-ENU.exe to extract the files to the default C:\SQL2Ksp4 folder.

## For Customers With an SA Password

1. Open the Windows Control Panel, Add or Remove Programs. Select Add New Programs from the left-hand menu.



2. Click the CD or Floppy button, click past the request to insert a CD or floppy, and browse to C:\SQL2kSP4\msde\setup.exe. Do not click Finish yet.



3. You will need to add additional information to the path in the Open box, including your password. Place your cursor at the end of setup.exe, add a space, then type or paste in the following case-sensitive text:

```
/UPGRADESP SQLRUN INSTANCENAME=ARTADEPOSIT SECURITYMODE=SQL  
UPGRADEUSER=sa UPGRADEPWD=type your password here /L*v  
C:\msde\log.log
```

Note that the entire text fits on a single line; the text displayed in this document wraps. The entire contents of the Open box should now read:

```
C:\SQL2kSP4\msde\setup.exe /UPGRADESP SQLRUN
INSTANCENAME=ARTADEPOSIT SECURITYMODE=SQL UPGRADEUSER=sa
UPGRADEPWD=type your password here /L*v C:\msdelog.log
C:\msdelog.log
```

4. Click Finish to begin the service pack installation. The service pack installation may take several minutes. During installation, progress may appear inactive but please be patient and wait until it completes.

Restart your system after the service pack installation completes.

